

# Clutchless Pulley



**Catalog**

**ARUFA**<sup>®</sup>

**YII TEAN ENTERPRISES CO., LTD**

Address : NO.33, Ln. 77, Xing ai Rd., Neihu Dist.,  
Taipei City, Taiwan Zip 114

Tel : 886-2-8792-4095

Fax : 886-2-8792-2487

URL : [www.yiitean.com.tw](http://www.yiitean.com.tw)

e-mail : [info@yiitean.com.tw](mailto:info@yiitean.com.tw)

COPYRIGHT © 2015 03 YII TEAN ALL RIGHTS RESERVED

# Clutchless Pulley



## SPL-01

OD: 130mm  
Grooves: 6GV  
High: 40mm  
Bearing: 35BD219  
Application: AUDI 2.4



## SPL-02

OD: 120mm  
Grooves: 6GV  
High: 40mm  
Bearing: 35BD219  
Application: AUDI 3.0



## SPL-03

OD: 115mm  
Grooves: 6GV  
High: 27mm  
Bearing: 35BD5222  
Application: VW POLO



## SPL-04

OD: 100mm  
Grooves: 4GV  
High: 30mm  
Bearing: 355212  
Application:

# Clutchless Pulley



## SPL-05

OD: 125mm  
Grooves: 4GV  
High: 21mm  
Bearing: 355212  
Application:



## SPL-06

OD: 115mm  
Grooves: 6GV  
High: 36mm  
Bearing: 355212  
Application:



## SPL-07

OD: 105mm  
Grooves: 6GV  
High: 36mm  
Bearing: 355212  
Application: BENZ



## SPL-08

OD: 114mm  
Grooves: 6GV  
High: 31mm  
Bearing: 35BD5020  
Application:

# Clutchless Pulley



## SPL-09

OD: 105mm  
Grooves: 8GV  
High: 37mm  
Bearing: 355212  
Application:



## SPL-10

OD: 115mm  
Grooves: 6GV  
High: 30mm  
Bearing: 35BD5222  
Application:



## SPL-11

OD: 114mm  
Grooves: 4GV  
High: 30mm  
Bearing: 35BD5222  
Application:



## SPL-12

OD: 115mm  
Grooves: 6GV  
High: 34mm  
Bearing: 35BD5222  
Application:

# Clutchless Pulley



## SPL-13

OD: 124mm  
Grooves: 7GV  
High: 30mm  
Bearing: 35BD5222  
Application:



## SPL-14

OD: 115.7mm  
Grooves: 8GV  
High: 30mm  
Bearing: 35BD5222  
Application:



## SPL-15

OD: 112mm  
Grooves: 4GV  
High: 16.7mm  
Bearing: 35BD5222  
Application:



## SPL-16

OD: 116mm  
Grooves: 7GV  
High: 45.5mm  
Bearing: 35BD5222  
Application:

# Clutchless Pulley



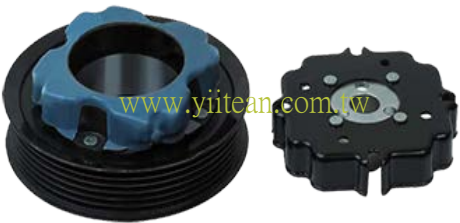
## SPL-17

OD: 116mm  
Grooves: 6GV  
High: 43mm  
Bearing: 35BD5222  
Application:



## SPL-18

OD: 108mm  
Grooves: 6GV  
High: 26.8mm  
Bearing: 35BD5222  
Application:



## SPL-19

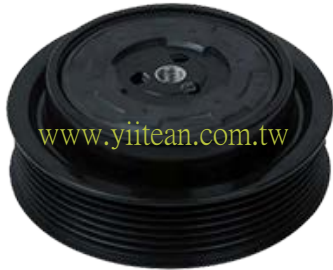
OD: 115mm  
Grooves: 6GV  
High: 26.5mm  
Bearing: 35BD5222  
Application:



## SPL-20

OD: 105mm  
Grooves: 6GV  
High: 32mm  
Bearing: 35BD5222  
Application: Audi 2.0

# Clutchless Pulley



## SPL-21

OD: 115mm  
Grooves: 7GV  
High: 46mm  
Bearing: 35BD5222  
Application:



## SPL-22

OD: 115mm  
Grooves: 6GV  
High: 39mm  
Bearing: 35BD5222  
Application:



## SPL-23

OD: 110mm  
Grooves: 4GV  
High: 30mm  
Bearing: 35BD5212  
Application: BMW760



## SPL-24

OD: 110mm  
Grooves: 6GV  
High: 26.7mm  
Bearing: 35BD5212  
Application: BENZ

# Clutchless Pulley



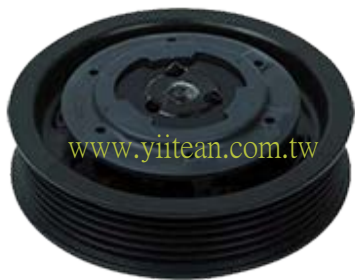
## SPL-25

OD: 105mm  
Grooves: 5GV  
High: 25mm  
Bearing: 35BD5212  
Application:



## SPL-26

OD: 125mm  
Grooves: 6GV  
High: 28.5mm  
Bearing: 35BD5212  
Application:



## SPL-27

OD: 120mm  
Grooves: 6GV  
High: 28.5mm  
Bearing: 35BD5212  
Application:



## SPL-28

OD: 115mm  
Grooves: 5GV  
High: 31mm  
Bearing: 35BD5222  
Application:



# Clutchless Pulley



## SPL-29

OD: 115mm  
Grooves: 6GV  
High: 40mm  
Bearing: 35BD5222  
Application: VW



## SPL-30

OD: 115mm  
Grooves: 6GV  
High: 39mm  
Bearing: 35BD5220  
Application: VW, POLO



## SPL-31

OD: 115mm  
Grooves: 5GV  
High: 37mm  
Bearing: 35BD5212  
Application: BENZ



## SPL-32

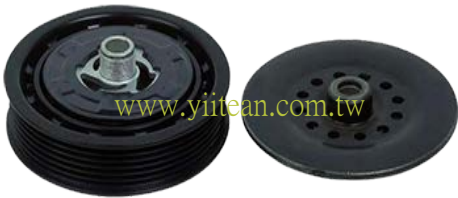
OD: 115mm  
Grooves: 4GV  
High: 21mm  
Bearing: 35BD5212  
Application: TOYOTA YARIS

# Clutchless Pulley



## SPL-33

OD: 105mm  
Grooves: 7GV  
High: 35.5mm  
Bearing: 35BD5212  
Application: BENZ



## SPL-34

OD: 125mm  
Grooves: 6GV  
High: 29mm  
Bearing: 35BD5212  
Application: TOYOTA COROLLA



## SPL-35

OD: 116mm  
Grooves: 6GV  
High: 30mm  
Bearing: 35BD5212  
Application: BMW735



## SPL-36

OD: 115mm  
Grooves: 4GV  
High: 30mm  
Bearing: 35BD5212  
Application:

# Clutchless Pulley



## SPL-37

OD: 105mm  
Grooves: 5GV  
High: 38mm  
Bearing: 35BD5212  
Application: BENZ



## SPL-38

OD: 110mm  
Grooves: 6GV  
High: 29mm  
Bearing: 35BD5220  
Application:



## SPL-39

OD: 100mm  
Grooves: 4GV  
High: 30mm  
Bearing: 35BD5212  
Application: BMW



## SPL-40

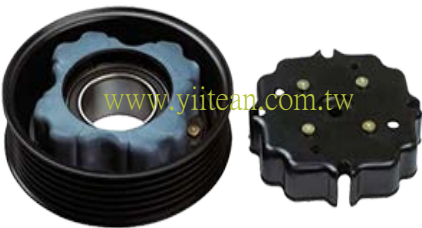
OD: 120mm  
Grooves: 6GV  
High: 29mm  
Bearing: 35BD5212  
Application: YARIS

# Clutchless Pulley



## SPL-41

OD: 116mm  
Grooves: 5GV  
High: 27mm  
Bearing: 35BD5222  
Application:



## SPL-42

OD: 114mm  
Grooves: 6GV  
High: 27mm  
Bearing: 35BD5222  
Application: POLO



## SPL-43

OD: 116mm  
Grooves: 7GV  
High: 33mm  
Bearing: 35BD5222  
Application: AUDI



## SPL-44

OD: 105mm  
Grooves: 6GV  
High: 30mm  
Bearing: 35BD5212  
Application:

# Clutchless Pulley



## SPL-45

OD: 135mm  
Grooves: 7GV  
High: 32mm  
Bearing: 35BD5212  
Application: COROLLA



## SPL-46

OD: 113mm  
Grooves: 6GV  
High: 27mm  
Bearing: 35BD5220  
Application: VW, SGITAR



## SPL-47

OD: 110mm  
Grooves: 6GV  
High: 31mm  
Bearing: 35BD5220  
Application: CVC



## SPL-48

OD: 110mm  
Grooves: 5GV  
High: 26.5mm  
Bearing: 35BD5220  
Application: CVC

# Clutchless Pulley



## SPL-49

OD: 119.5mm  
Grooves: 7GV  
High: 38mm  
Bearing: 35BD5222  
Application: AUDI Q7



## SPL-50

OD: 124mm  
Grooves: 7GV  
High: 45mm  
Bearing: 35BD5222  
Application: AUDI Q7



## SPL-51

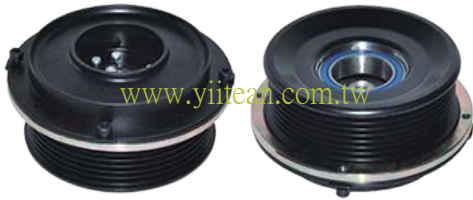
OD: 116mm  
Grooves: 5GV  
High: 27mm  
Bearing: 35BD5220  
Application: BENZ



## SPL-52

OD: 125mm  
Grooves: 4GV  
High: 21mm  
Bearing: 35BD5212  
Application: TOYOTA

# Clutchless Pulley



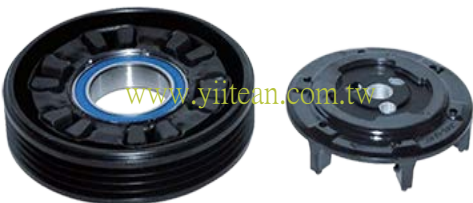
## SPL-53

OD: 132mm  
Grooves: 7GV  
High: 40mm  
Bearing: 35BD5212  
Application: TOYOTA CARMARY



## SPL-54

OD: 105mm  
Grooves: 6GV  
High: 27mm  
Bearing: 35BD5212  
Application:



## SPL-55

OD: 110mm  
Grooves: 4GV  
High: 22.5mm  
Bearing: 35BD5212  
Application: BMW760



## SPL-56

OD: 115mm  
Grooves: 7GV  
High: 36mm  
Bearing: 35BD5212  
Application:

# Clutchless Pulley



## SPL-57

OD: 120mm  
Grooves: 6GV  
High: 39mm  
Bearing: 35BD5222  
Application:



## SPL-58

OD: 85mm  
Grooves:  
High: 69.5mm  
Bearing: 35BD5212  
Application: AUDO Q7 4.2



## SPL-59

OD: 125mm  
Grooves: 7GV  
High: 47mm  
Bearing: 35BD5220  
Application: BENZ E260



## SPL-60

OD: 105mm  
Grooves: 6GV  
High: 38mm  
Bearing: 35BD5220  
Application:



# Clutchless Pulley



## SPL-61

OD: 105mm  
Grooves: 7GV  
High: 38mm  
Bearing: 35BD5220  
Application:



## SPL-62

OD: 115mm  
Grooves: 6GV  
High: 37mm  
Bearing: 35BD5220  
Application:



## SPL-63

OD: 125mm  
Grooves: 7GV  
High: 39.5mm  
Bearing: 35BD5220  
Application:



## SPL-64

OD: 125mm  
Grooves: 7GV  
High: 46mm  
Bearing: 35BD5220  
Application:

# Clutchless Pulley



## SPL-65

OD: 105mm  
Grooves: 5GV  
High: 30mm  
Bearing: 35BD5212  
Application:



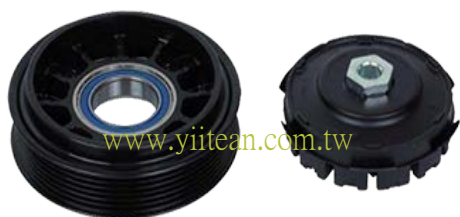
## SPL-66

OD: 130mm  
Grooves: 4GV  
High: 37mm  
Bearing: 35BD5212  
Application:



## SPL-67

OD: 120mm  
Grooves: 6GV  
High: 38mm  
Bearing: 35BD5222  
Application:



## SPL-68

OD: 125mm  
Grooves: 6GV  
High: 36mm  
Bearing: 35BD5212  
Application:

# Clutchless Pulley



## SPL-69

OD: 115mm  
Grooves: 7GV  
High: 32mm  
Bearing: 35BD5212  
Application:



## SPL-70

OD: 125mm  
Grooves: 6GV  
High: 37mm  
Bearing: 35BD5212  
Application:



## SPL-71

OD: 115mm  
Grooves: 6GV  
High: 36mm  
Bearing: 35BD5212  
Application:



## SPL-72

OD: 115mm  
Grooves: 6GV  
High: 38mm  
Bearing: 35BD5220  
Application:

# Clutchless Pulley



## SPL-73

OD: 110mm  
Grooves: 4GV  
High: 23mm  
Bearing: 35BD5212  
Application:



## SPL-74

OD: 115mm  
Grooves: 6GV  
High: 29mm  
Bearing: 35BD5212  
Application:



## SPL-75

OD: 100mm  
Grooves: 6GV  
High: 35mm  
Bearing: 35BD5212  
Application:



## SPL-76

OD: 125mm  
Grooves: 6GV  
High: 32mm  
Bearing: 35BD5212  
Application:

# Clutchless Pulley



## SPL-77

OD: 123mm  
Grooves: 6GV  
High: 44mm  
Bearing: 35BD5220  
Application: HYUNDAI



## SPL-78

OD: 115mm  
Grooves: 6GV  
High: 30mm  
Bearing: 35BD5220  
Application: KIA



## SPL-79

OD: 115mm  
Grooves: 4GV  
High: 21mm  
Bearing: 35BD5212  
Application: YARIS



## SPL-80

OD: 115mm  
Grooves: 6GV  
High: 48.6mm  
Bearing: 35BD5220  
Application:

# Clutchless Pulley



## SPL-81

OD: 130mm  
Grooves: 6GV  
High: 37.7mm  
Bearing: 35BD5220  
Application:



## SPL-82

OD: 125mm  
Grooves: 7GV  
High: 32mm  
Bearing: 35BD5212  
Application:



## SPL-83

OD: 131mm  
Grooves: 6GV  
High: 44mm  
Bearing: 35BD5212  
Application:



## SPL-84

OD: 110mm  
Grooves: 4GV  
High: 24mm  
Bearing: 35BD5020  
Application:

# Clutchless Pulley



## SPL-85

OD: 124mm  
Grooves: 7GV  
High: 39mm  
Bearing: 35BD5220  
Application:



## SPL-86

OD: 120mm  
Grooves: 7GV  
High: 37mm  
Bearing: 35BD5220  
Application:



## SPL-87

OD: 115mm  
Grooves: 4GV  
High: 28mm  
Bearing: 35BD5212  
Application:



## SPL-88

OD: 115mm  
Grooves: 6GV  
High: 39mm  
Bearing: 35BD5220  
Application:

# Clutchless Pulley



## SPL-89

OD: 115mm  
Grooves: 6GV  
High: 39mm  
Bearing: 35BD5222  
Application:



## SPL-90

OD: 130mm  
Grooves: 6GV  
High: 38.5mm  
Bearing: 35BD5220  
Application:



## SPL-91

OD: 114mm  
Grooves: 6GV  
High: 32mm  
Bearing: 35BD5520  
Application:



## SPL-92

OD: 115mm  
Grooves: 6GV  
High: 30mm  
Bearing: 35BD5212  
Application:



# Clutchless Pulley



## SPL-93

OD: 112mm  
Grooves: 6GV  
High: 33mm  
Bearing: 35BD5220  
Application:



## SPL-94

OD: 105mm  
Grooves: 6GV  
High: 36mm  
Bearing: 35BD5220  
Application:



## SPL-95

OD: 105mm  
Grooves: 6GV  
High: 47.5mm  
Bearing: 35BD5222  
Application:



## SPL-96

OD: 115mm  
Grooves: 8GV  
High: 34mm  
Bearing: 35BD5222  
Application:

# Clutchless Pulley



## SPL-97

OD: 124mm  
Grooves: 6GV  
High: 31mm  
Bearing: 35BD5212  
Application:



## SPL-98

OD: 115mm  
Grooves: 6GV  
High: 27.5mm  
Bearing: 35BD5212  
Application:



## SPL-99

OD: 115mm  
Grooves: 8GV  
High: 41mm  
Bearing: 35BD5220  
Application:



## SPL-100

OD: 120mm  
Grooves: 5GV  
High: 35mm  
Bearing: 35BD5222  
Application:

# Clutchless Pulley



## SPL-101

OD: 105mm  
Grooves: 6GV  
High: 30mm  
Bearing: 35BD5212  
Application:



## SPL-102

OD: 125mm  
Grooves: 7GV  
High: 32mm  
Bearing: 35BD5212  
Application:



## SPL-103

OD: 135mm  
Grooves: 7GV  
High: 32mm  
Bearing: 35BD5212  
Application:



## SPL-104

OD: 110mm  
Grooves: 7GV  
High: 30mm  
Bearing: 35BD5212  
Application:

# Clutchless Pulley



## SPL-105

OD: 115mm  
Grooves: 6GV  
High: 38mm  
Bearing: 35BD5220  
Application:



## SPL-106

OD: 115mm  
Grooves: 5GV  
High: 35mm  
Bearing: 35BD5222  
Application:



## SPL-107

OD: 115mm  
Grooves: 6GV  
High: 41mm  
Bearing: 35BD5222  
Application:



## SPL-108

OD: 119mm  
Grooves:  
High: 27mm  
Bearing: 35BD5222  
Application: VW Touareg

# Clutchless Pulley



## SPL-H01

Apply to assembly: SPL-26 / SPL-28 / SPL-34 / SPL-44  
SPL-45 / SPL-69 / SPL-74 / SPL-101  
SPL-102 / SPL-106



## SPL-H02

Apply to assembly: SPL-25



## SPL-H03

Apply to assembly: SPL-57



## SPL-H04

Apply to assembly:

# Clutchless Pulley



## SPL-H05

Apply to assembly:



## SPL-H06

Apply to assembly:



## SPL-H07

Apply to assembly: SPL-19



## SPL-H08

Apply to assembly: SPL-03 / SPL-41 / SPL-51

# Clutchless Pulley



## SPL-H09

Apply to assembly: SPL-46



## SPL-H10

Apply to assembly: SPL-84 / SPL-93



## SPL-H11

Apply to assembly: SPL-38 / SPL-47 / SPL-48



## SPL-H12

Apply to assembly: SPL-91

# Clutchless Pulley



## SPL-H13

Apply to assembly: SPL-68 / SPL-71 / SPL-76  
SPL-82 / SPL-87 / SPL-98



## SPL-H14

Apply to assembly: SPL-60 / SPL-62 / SPL-90  
SPL-94 / SPL-99 / SPL-105



## SPL-H15

Apply to assembly: SPL-61 / SPL-63 / SPL-67  
SPL-72 / SPL-89 / SPL-100



## SPL-H16

Apply to assembly: SPL-59 / SPL-80 / SPL-88



# Clutchless Pulley



## SPL-H17

Apply to assembly:



## SPL-H18

Apply to assembly: SPL-08



## SPL-H19

Apply to assembly: SPL-78



## SPL-H20

Apply to assembly: SPL-53 / SPL-83

# Clutchless Pulley



## SPL-H21

Apply to assembly: SPL-58



## SPL-H22

Apply to assembly: SPL-77



## SPL-H23

Apply to assembly: SPL-58



## SPL-H24

Apply to assembly: SPL-77

# Clutchless Pulley



## SPL-H25

Apply to assembly: SPL-36 / SPL-56 / SPL-103



## SPL-H26

Apply to assembly: SPL-36 / SPL-56 / SPL-103



## SPL-H27

Apply to assembly: SPL-83



## SPL-H28

Apply to assembly: SPL-H002 / SPL-25

# Clutchless Pulley



## SPL-H29

Apply to assembly: SPL-H001 / SPL-26 / SPL-45 / SPL-69  
SPL-74 / SPL-101 / SPL-102



## SPL-H30

Apply to assembly: SPL-108



## SPL-H31

Apply to assembly: SPL-H001 / SPL-34 / SPL-57



## SPL-H32

Apply to assembly: SPL-H003/ SPL-57

# Clutchless Pulley



## SPL-H33

Apply to assembly: SPL-H001



## SPL-H34

Apply to assembly: SPL-H001 / SPL-28



## SPL-H35

Apply to assembly: SPL-H001 / SPL-44



## SPL-H36

Application: VW Golf

# Clutchless Pulley



## **SPL-H37**

Application:

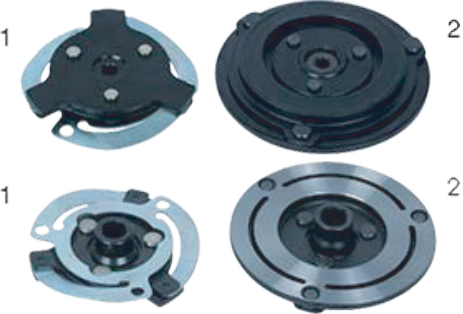
[www.yiitean.com.tw](http://www.yiitean.com.tw)

# Clutchless Pulley



## SPL-HB01

OD: 112mm  
Grooves: 6GV  
High: 33mm  
Bearing: 35BD5220  
Application:



## SPL-HB02

www.yiitean.com.tw

# Clutchless Pulley



## SPL-R01

High:

Apply to assembly:



## SPL-R02

High:

Apply to assembly:



## SPL-R03

High:

Apply to assembly:



## SPL-R04

High:

Apply to assembly:



# Clutchless Pulley



## SPL-R05

High:

Apply to assembly:



## SPL-R06

High:

Apply to assembly:



## SPL-R07

High:

Apply to assembly:



## SPL-R08

High: 18mm

Apply to assembly:

# Clutchless Pulley



## SPL-RB09

High: 14mm

Apply to assembly: SPL-03 / SPL-41 / SPL-51

www.yiitean.com.tw

# Clutchless Pulley



## SPL-T01

Ann discharge spacing:

Application:



## SPL-T02

Ann discharge spacing:

Application:



## SPL-T03

Ann discharge spacing: 48mm

Application:



## SPL-T04

Ann discharge spacing: 23mm

Application:

# Clutchless Pulley



## **SPL-T05**

Ann discharge spacing: 21mm

Application:

[www.yiitean.com.tw](http://www.yiitean.com.tw)



YII TEAN ENTERPRISES CO., LTD

Address : NO.33, Ln. 77, Xing ai Rd., Neihu Dist.,  
Taipei City, Taiwan Zip 114

Tel : 886-2-8792-4095

Fax : 886-2-8792-2487

URL : [www.yiitean.com.tw](http://www.yiitean.com.tw)

e-mail : [info@yiitean.com.tw](mailto:info@yiitean.com.tw)